



## optiClient Attendant

### The PC Attendant Console for HiPath 2000/3000/5000 systems

optiClient Attendant is the PC attendant console for the HiPath 2000/3000/5000 IP communication platforms.

It can be connected to the HiPath 2000, 3800, 37xx, 35xx and 33xx and 500CS models. Depending on the model, up to 6 optiClient Attendants can be connected to each HiPath system.

**SIEMENS**

Global network of innovation

All the functions of an attendant telephone are simulated on the graphical user interface on the PC monitor.

The main functions of the optiClient Attendant are:

- User-friendly operation of an attendant telephone at the PC
- Optical busy display
- Access to various telephone books

Optional:

- Central functions in HiPath 2000/3000/5000 networks
- Charge logging/evaluation of the communication system on the same PC

The optiClient Attendant is supported by the operating systems Microsoft Windows® 2000 and XP. Parallel operation with other Microsoft Office applications is possible. This means the PC will be cost-effective even if call processing represents only part of the workstation's overall functions.

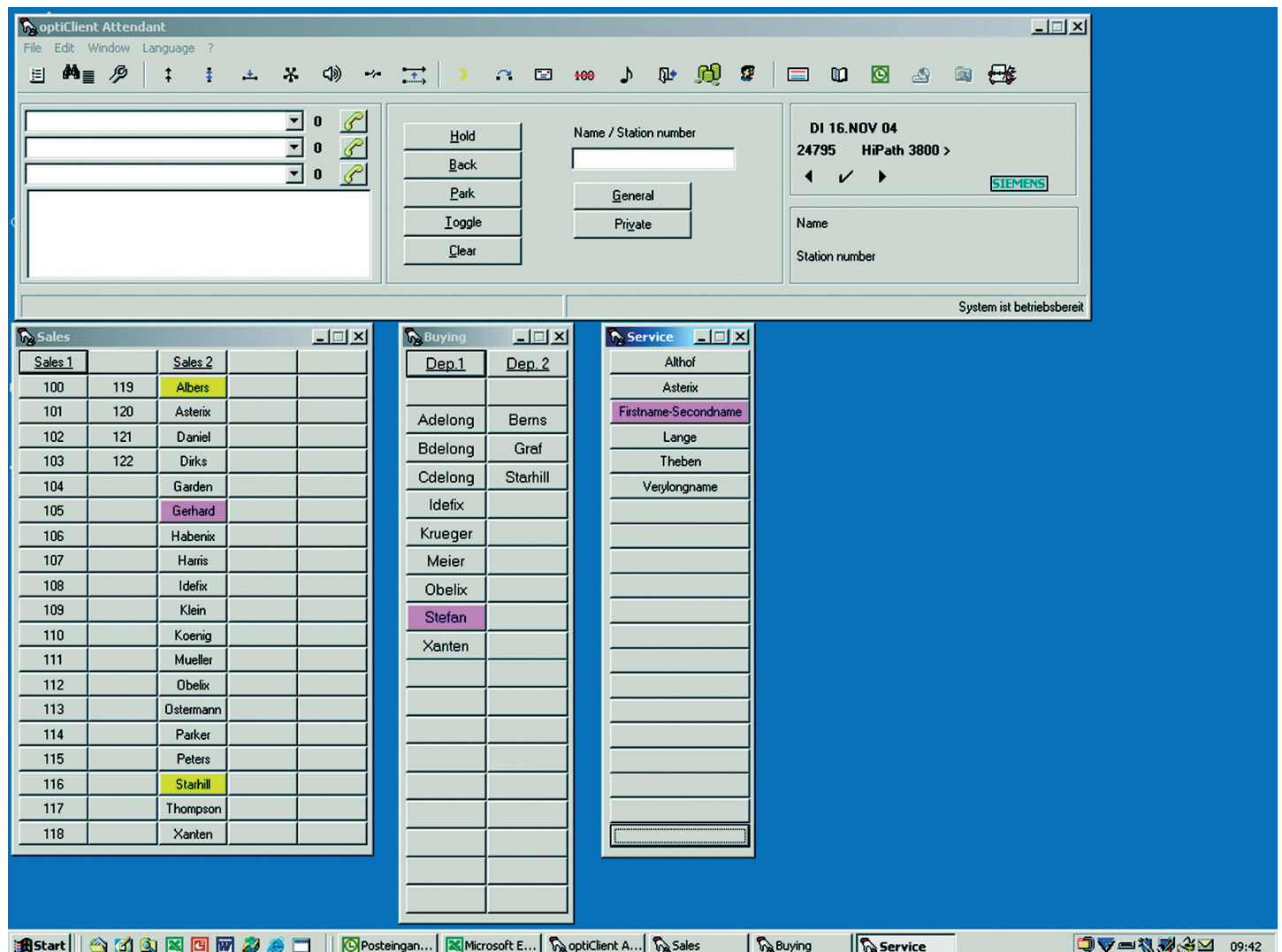
## Description of the most important functions

### Operating functionality on the PC monitor

The functionality of an attendant telephone is clearly presented on a graphical user interface on the PC monitor. Operations can be performed using either the PC keyboard or mouse buttons. The busy fields can be matched to individual requirements.

### Parallel operation with other Windows applications

Operation of standard office applications (Microsoft Windows Office) in parallel with optiClient Attendant is permitted. When there is a call, the PC attendant console automatically opens up on the screen and running programs move to the background.



# Technical data

## optiClient Attendant

### V7.0

#### Functional scope

- Display of waiting calls with type, name, and telephone number
- Acoustic signaling on the PC with volume adjustment; can be deactivated
- Call status display
- Speed extending of calls
- Speed dialing via busy fields
- Individual configuration of the busy fields with directory number or name
- Busy fields for max. 64 network nodes
- Color display of the busy condition
- Definition of 2 referral extensions per busy field
- Definition of a note per busy field
- Call toggle, hold, park
- Number redial (last 10 destinations)
- Conference with up to 5 call participants
- Choice of electronic telephone books: system telephone book, Outlook Contacts, internal telephone book, LDAP access
- Inclusion of external telephone CD-ROMs
- Suppl. functions such as override, call-back, broadcast intercom calls, speaker call, caller list, statistics
- Charge logging and interrogation for certain calls (not for US)
- Night service
- Online help
- Menu-prompted installation
- User interface languages: German, English (USA/UK neutral), French, Italian, Spanish, Portuguese, Dutch

#### Permitted communication systems

Possible software versions of HiPath 2000/3000/5000 are:

- HiPath 2000 V1.0
- HiPath 3000 V5.0 (models 3300 - 3800)
- HiPath 3000 V4.0, V3.0, V1.2 (models 3300 - 3750)
- HiPath 5000 V5.0

#### Connection variants

- Via optiset E control adapter to optiset E
- Via USB interface to optiPoint 500/600 telephones
- Via TCP/IP to HG 1500

#### PC requirements

- The PC must meet the requirements of the operating system employed
- Min. 50 MB free space on the hard disk
- Min. 128 MB main memory
- Sound card
- Free V.24 interface if connected via optiset E control adapter
- USB1.1 interface for connection to optiPoint 500/600 telephones
- TCP/IP-compliant network card for IP connection
- Free V.24 interface for connecting a Braille line
- Monitor: VGA 1024 x 768 pixels

#### Operating systems

- Microsoft Windows 2000 and XP

#### Installation/ administration

- Menu-prompted installation
- Online help

#### Scope of delivery

- CD-ROM with optiClient Attendant software and electronic documentation

#### Options

- optiset E control adapter
- Headset

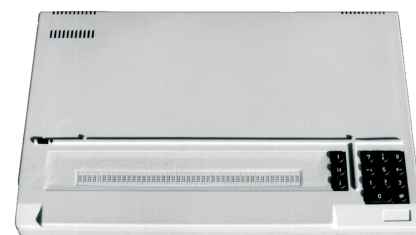
#### Licensing

The program must be licensed for all connection variants.

#### Braille line (not for US)

##### Connecting a Braille line

optiClient Attendant allows a Braille line to be connected for visually impaired persons. The status information of the optiClient Attendant is imaged on the Braille line to allow a visually impaired person to operate an attendant console.



# Our strengths – Your advantages

Siemens is known worldwide as a trailblazer in the advancement of information and communication technologies. No other company offers such a comprehensive and innovative product portfolio.

Regardless of which communication technology you are using today – or want to use tomorrow – Siemens offers you the right solution.

[www.siemens.com/hipath](http://www.siemens.com/hipath)

© Siemens AG 10/2005  
Siemens Communications • Hofmannstr. 51 • D-81359 München

**Reference No.: A31002-E1300-A320-5-7629**

The information provided in this document contains merely general descriptions or characteristics of performance which in case of actual use do not always apply as described or which may change as a result of further development of the products. An obligation to provide the respective characteristics shall only exist if expressly agreed in the terms of contract. The trademarks used are owned by Siemens AG or their respective owners. Availability and technical specifications are subject to change without notice.